

Star Bright



12" x 12"
APPLIQUÉ BLOCK

STUDIO



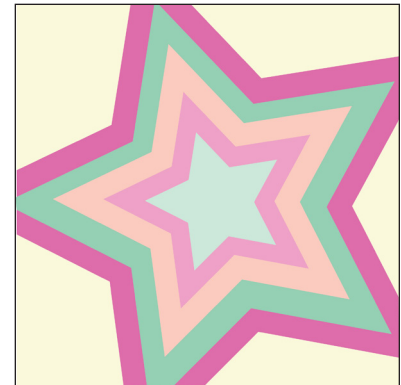
QUILTS

GETTING STARTED

- Read all instructions before beginning.
- Appliqué instructions are for fusible web and have been drawn in reverse.
- If you choose to appliqué using a different method, add seam allowances.
- Choose your favorite fusible web, and follow the manufacturer's directions.
- Have fun and enjoy creating this quilt block.

MATERIALS

13" x 13" yellow fabric (background)
14" x 14" dark pink fabric
14" x 14" dark green fabric
11" x 11" peach fabric
8" x 8" light pink fabric
5" x 5" light green fabric



Finished Block

QUILT BLOCK

Block size unfinished 12 ½" W x 12 ½" H, with seam allowance.

Block size finished 12" W x 12" H.

PREPARING THE BACKGROUND

1.) Cut a 12 ½" x 12 ½" light yellow fabric piece for the block backing.

Helpful Tip

Excessive handling of the quilt block may cause the outside edge to fray. To limit fraying, stay stitch around the edge of the block. To do this, set your stitch length to 1.5 and sew around the perimeter of the quilt ⅛" from the raw edge. You may also choose to cut your background block 13" x 13" and then trim to the unfinished size of 12 ½" x 12 ½" once the block is assembled.

PREPARING THE APPLIQUÉ

- 1.) Trace all parts of the appliqué design onto the paper side of the fusible web. You will need to join the 4 pages of templates together to get the full size pattern. Trace each piece separately. Wherever two shapes in the design butt together, you may want to extend the outline on the bottom layer piece by ⅛" to prevent any visible gaps.
- 2.) Cut around the appliqué shapes leaving approximately ¼" around each piece.
- 3.) Following the manufacturers directions, iron the fusible web appliqué pieces to the wrong side of the appropriate fabrics.
- 4.) Cut on the traced line of the appliqué pieces. Once trimmed, peel off the paper backing from the fusible web. A thin layer of fusible material will remain on the fabric for attaching the appliqué pieces to the background.

JOINING APPLIQUÉ PIECES

1.) Fuse the appliqué pieces on to the background in layers. Start with the bottom layer and work your way to the top. Appliqué pieces should be fused in the following order:

1. Fuse dark pink star (Piece A)
2. Fuse dark green star (Piece B)
3. Fuse light orange star (Piece C)
4. Fuse light pink star (Piece D)
5. Fuse light green star (Piece E)

2.) Machine stitch around the appliqué pieces using a satin, zig-zag, blanket stitch, or other stitch of choice.

3.) Feel free to embellish the stars with any additional stitch lines for added detail.

Helpful Tip

Before ironing any fusible piece, you should do a dry run to make sure all of the pieces fit together nicely and fit appropriately on the background. Layout the appliqué pieces and make any necessary adjustments.

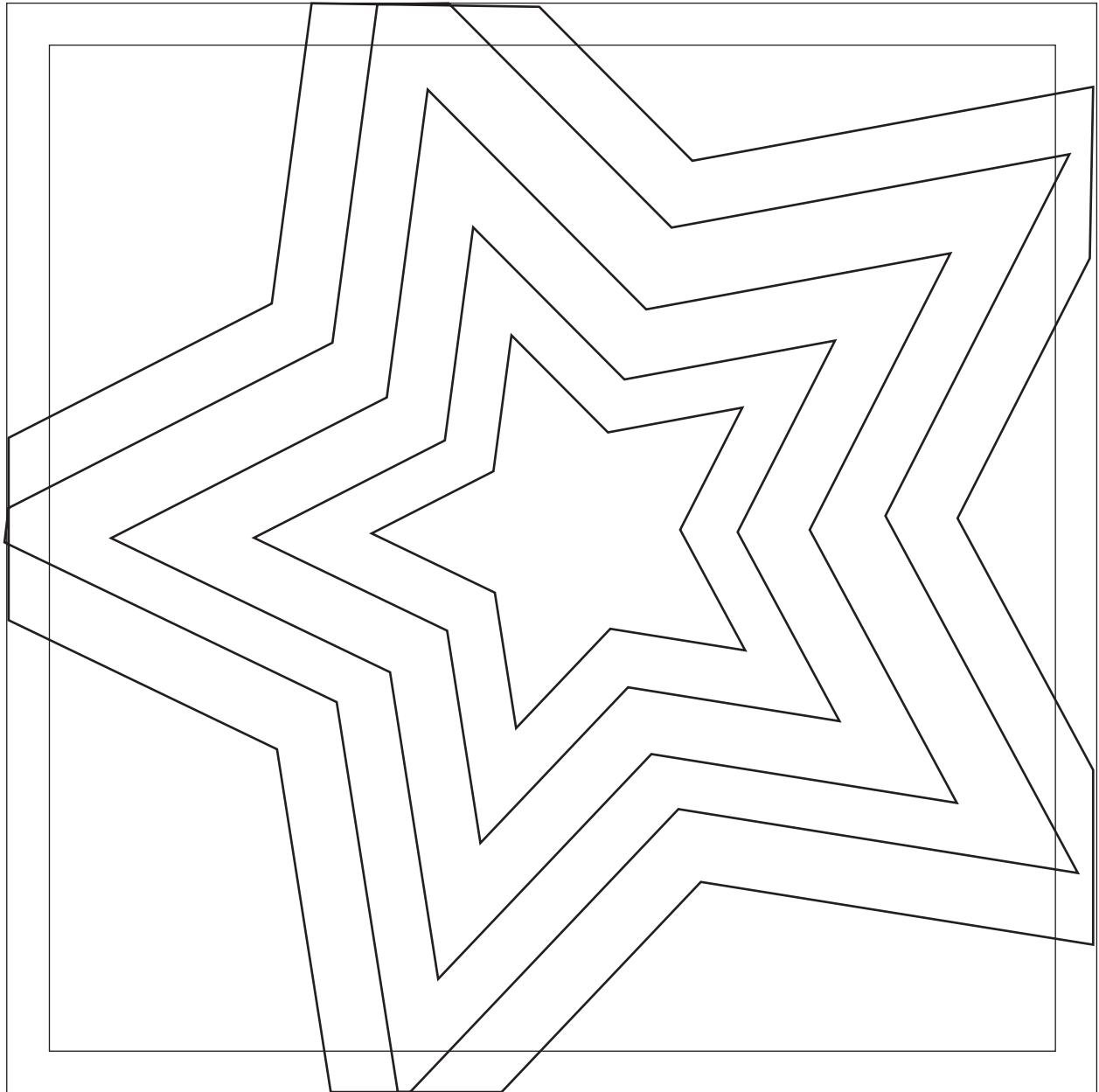
FINISHING QUILT BLOCK

The quilt block is finished and should measure 12 ½" x 12 ½".

You may create multiple blocks and join them to a quilt or finish the block as a stand alone piece. To finish as a stand alone piece:

- 1.) Cut a piece of batting and backing 3" - 4" larger than the block.
- 2.) Layer the backing, batting and quilt block and quilt as desired.
- 3.) Bind the quilt block using the binding method of your choice.

APPLIQUÉ LAYOUT (not full size)



CREATE QUILTS YOU LOVE

Visit www.studiorquilts.com
for more quilt patterns, inspiration, and ideas.

www.studiorquilts.com | [@studiorquilts](https://www.instagram.com/studiorquilts) | [#studiorquilts](https://www.facebook.com/studiorquilts)



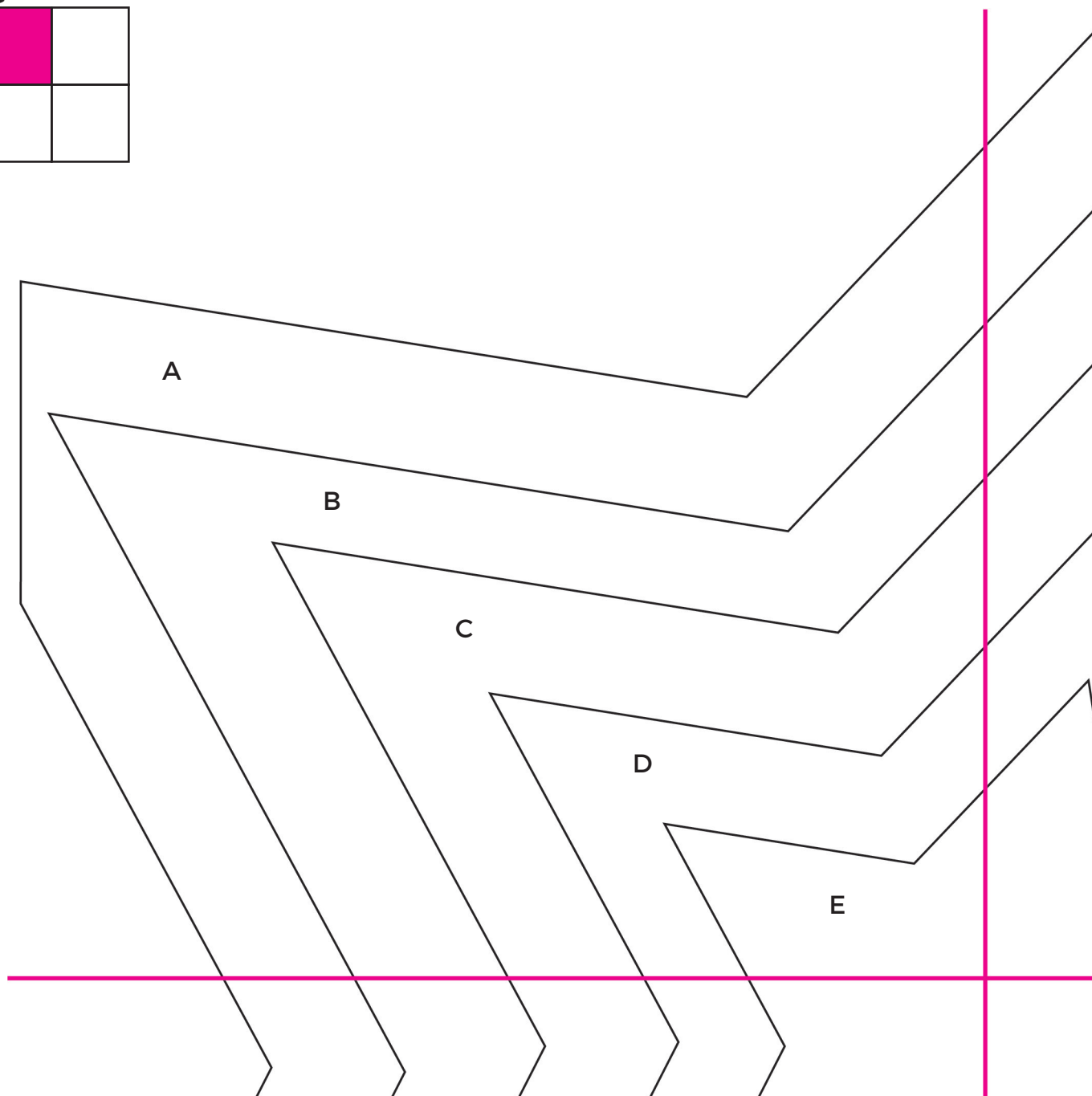
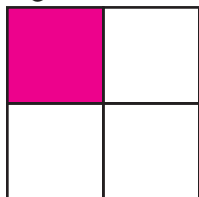
Studio R Quilts, LLC.
Rebecca Lidstrom
www.studiorquilts.com
hello@studiorquilts.com

© 2021 Studio R Quilts, LLC. All rights reserved.
No part of this pattern may be reproduced in any form unless otherwise stated.

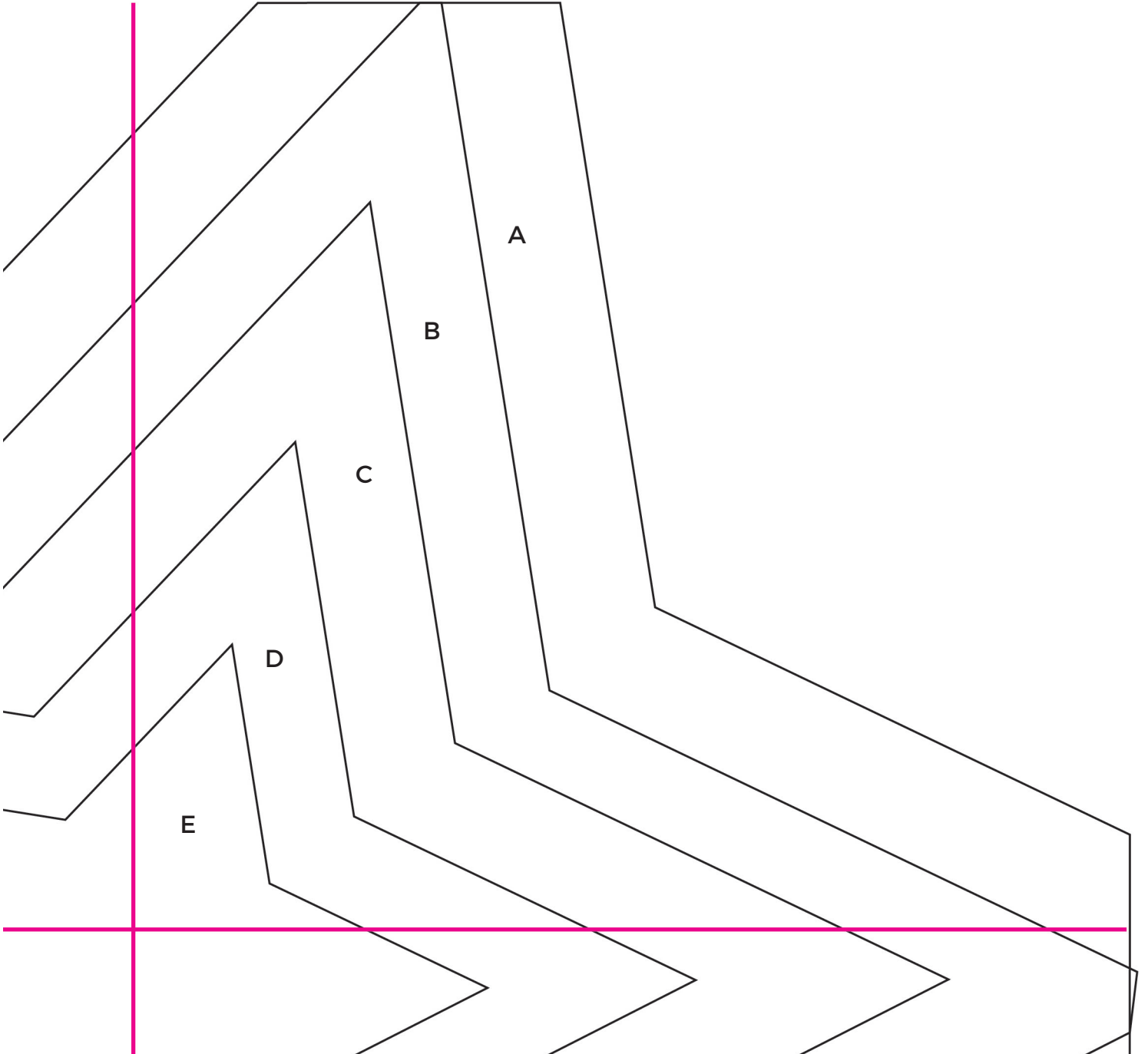
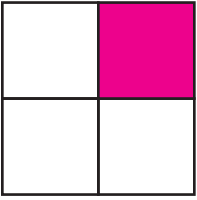
APPLIQUÉ TEMPLATES (drawn in reverse)

Join the 4 template pages together to get one full size pattern template.
Align the pink lines to match template pieces.
Each quadrant is identified for your reference.

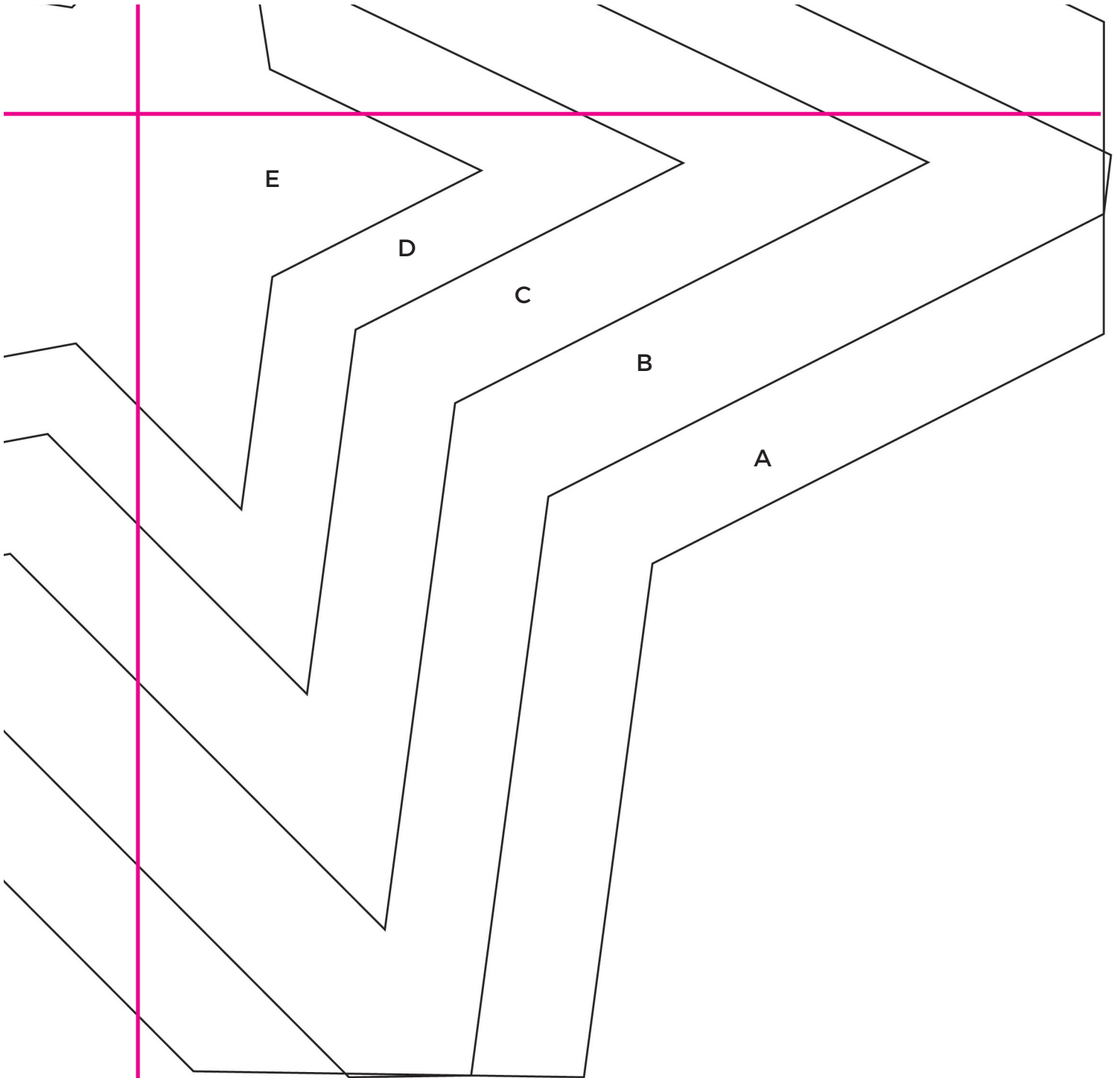
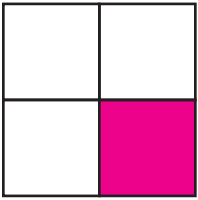
Quadrant



Quadrant



Quadrant



Quadrant

